



<http://www.pdf-tools.com>

Pilkington Texture  
Glass Range



**PILKINGTON**  
NSG Group Flat Glass Business

Choose from a wide  
range of genuine  
Pilkington designs



Contora™

4



Oak™

4



Charcoal Sticks™

4



Digital™

3



Florielle™

4



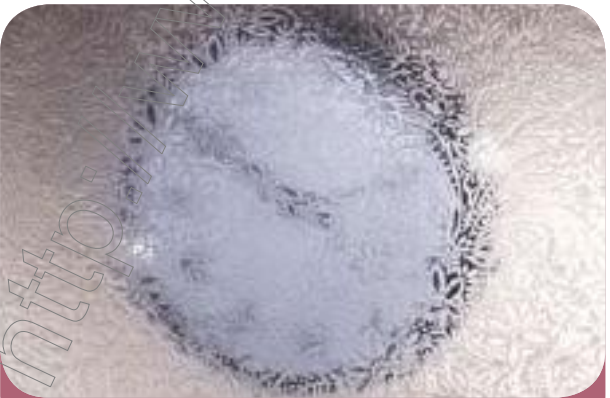
Taffeta™

3



Pelerine™

5



Chantilly™

2



Everglade™

5

Ask for our designs by name





Mayflower™

4



Minster™

2

*Due to the manufacturing process, the pattern of **Warwick™** is completely random and no two pieces are the same.*



Warwick™

1

*For important information on the use of this pattern please visit [www.pilkington.co.uk/textureglass](http://www.pilkington.co.uk/textureglass)*



Pilkington Oriel **Coppice**™

Inset: Pilkington Oriel Texture **Coppice**™

## Pilkington Oriel Range

With a superb range of designs, together with diffused glass options for each design, this premium range of etched glass adds a touch of style and elegance to your home.



Pilkington Oriel **Brocade**™

Pilkington Oriel Texture **Brocade**™



Pilkington Oriel **Laurel**™

Pilkington Oriel Texture **Laurel**™



Pilkington Oriel **Canterbury**™

Pilkington Oriel Texture **Canterbury**™

# Pilkington replacement range

For customers who require replacement glass to match an existing pattern, a number of well-established designs are still available.



Arctic™

4



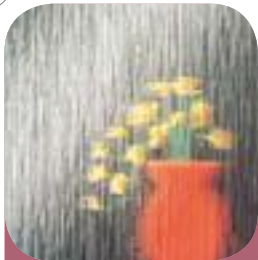
Stippolyte™

4



Flemish™

2



Cotswold™

5



Autumn™

3



Sycamore™

2





## Technical information

However you use Pilkington glass it is essential for safety and performance reasons that it is correctly specified and installed. Common areas of impact risk, where it is recommended that impact safety glass classified by BS EN 12600 is installed, include:

- Glazed doors
- Glazing adjacent to doors
- Low-level glazing
- Bathroom areas
- Protective barriers
- Furniture and cabinets

*The Pilkington Texture Glass pattern brand names are registered trademarks of the Pilkington Group.*

# Five levels of privacy



Level 1



Level 2



Level 3



Level 4



Level 5

- Pilkington Texture Glass offers privacy and style throughout the home
- Five levels of privacy are available, graded from 1 (least obscuration) to 5 (greatest obscuration)
- There are 12 original patterns in the main range, including exclusive designs by Oliver Heath of Blustin Heath Design, a regular on the BBC's Home Front and Changing Rooms series
- All are available toughened or laminated for safety and security
- All are suitable for double glazing
- The range is widely available from your local glass merchant or glazier

For privacy, pure style or to allow more light into internal rooms, Pilkington Texture Glass gives you a fantastic range of attractive options.

The Pilkington range gives you no fewer than 18 different designs, together with our premium range of etched glass. From classic to contemporary, no one offers a bigger choice of original patterns.

The advantages of Pilkington Texture Glass are easy to see too: it allows maximum light while maintaining your chosen level of privacy or obscurity, and also forms an attractive decorative feature itself. That's why our texture glass is the most trusted in the market.

With a wide range of designs and the Pilkington Oriol etched glass range offering even more possibilities – all with the quality you would expect from the Pilkington range – there really is no better choice of decorative glass for your home.



This publication provides only a general description of the product. Further, more detailed information may be obtained from your local Pilkington Building Products supplier. It is the responsibility of the user to ensure that the use of this product is appropriate for any particular application and that such use complies with all relevant legislation, standards, code of practice and other requirements. To the fullest extent permitted by applicable laws, Nippon Sheet Glass Co. Ltd. and its subsidiary companies disclaim all liability for any error in or omission from this publication and for all consequences of relying on it. The Pilkington Texture Glass pattern brand names are registered trademarks of the Pilkington Group.

**Please note that imagery throughout is for illustration purposes only.**



CE marking confirms that a product complies with its relevant harmonised European Norm. The CE marking label for each product, including declared values, can be found at [www.pilkington.com/CE](http://www.pilkington.com/CE)



**PILKINGTON**  
NSG Group Flat Glass Business

**Pilkington Building Products - UK**

Prescot Road, St Helens, WA10 3TT United Kingdom

Telephone 01744 692000 Fax 01744 692880

[pilkington@respond.uk.com](mailto:pilkington@respond.uk.com)

[www.pilkington.co.uk](http://www.pilkington.co.uk)